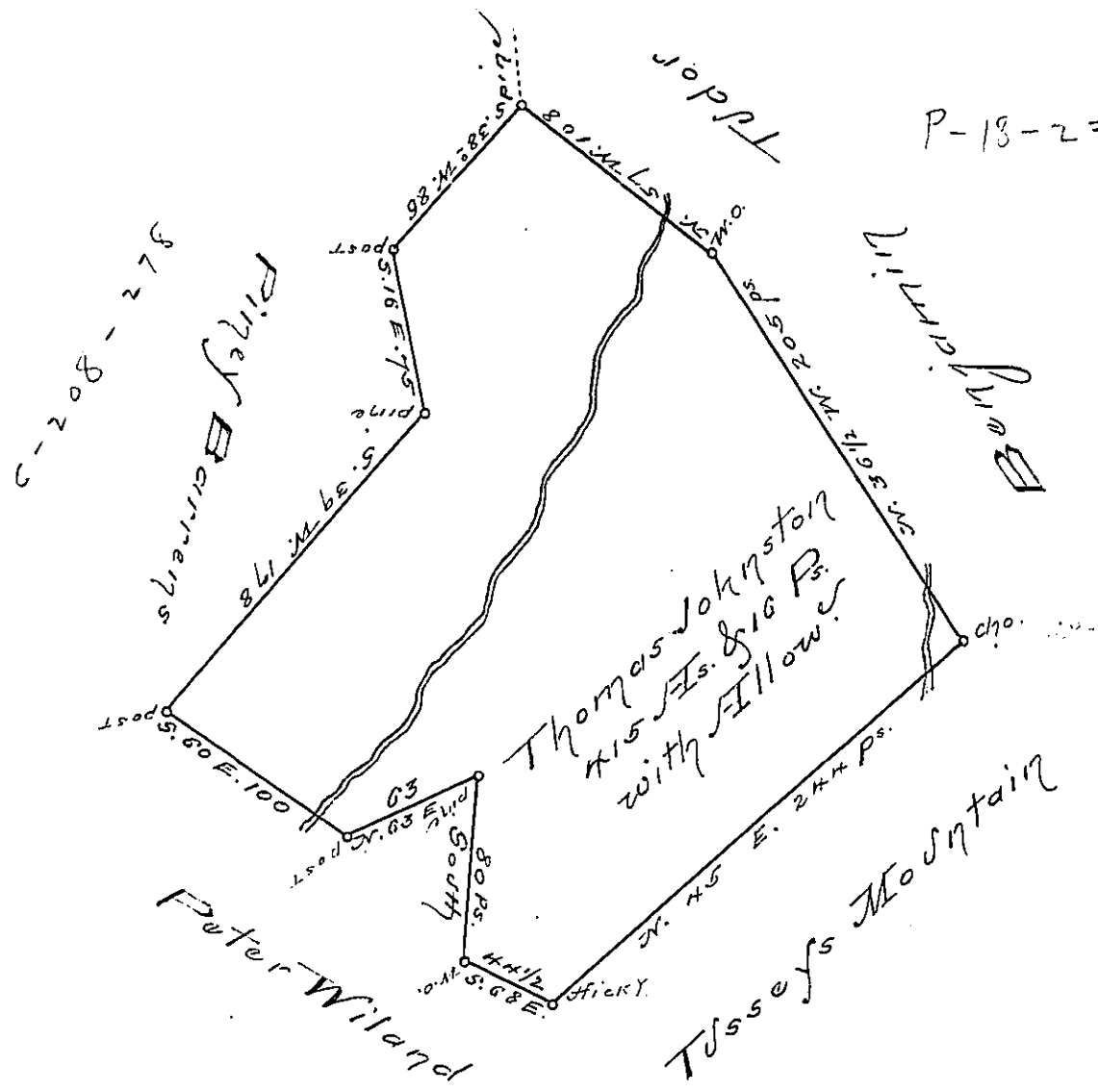


P-18-230



A Draught of a Tract of Land Situate  
 on both sides of Clover Creek in Morrisons Cove  
 Bedford County Containing four hundred and  
 fifteen Acres and sixteen perches with the usual  
 allowance of six p<sup>t</sup> Cent for Road &c<sup>a</sup>

Surveyed for Thomas Johnston the 23<sup>d</sup> day  
 of November 1788 In Pursuance of a Warrant  
 Dated March 16<sup>th</sup> 1787.

To  
 John Lukens Esq<sup>r</sup> J. G. George Woods D. S.

IN TESTIMONY that the above is a copy of the original remaining on file in the  
 Department of Internal Affairs of Pennsylvania, made con-  
 formably to an Act of Assembly approved the 16th day of  
 February, 1833. I have hereunto set my Hand and caused  
 the Seal of said Department to be affixed at Harrisburg, this  
 —third— day of —March— 1896.

James W. Patton  
 Secretary of Internal Affairs.